



LIFETIME ASSISTANCE FOR DEVELOPMENTAL AND CHALLENGING INDIVIDUAL NEEDS

LADACIN

NETWORK

ANNUAL REPORT 2022-2023



Our Mission

The mission of LADACIN Network, a non-profit Agency, is to provide a continuum of care, including educational, therapeutic, social, residential and support services to infants, children and adults with complex physical and developmental disabilities or delays.

Board of Trustees

Stephen F. Bell
President

Victor Sbailo
Vice President

Mary F. Hartnett, Esq.
Secretary

Nancy Kegelman, Ed.D.
Treasurer

William P. Collopy
Joel Goldfinger
Christine Russell Gray
Thomas F. Hayes
Kanesha Jones

Stephan Lowy
Philip Nisbit
Marilyn Shapiro
Kelly Siegfried
Dr. Vincent J. Vivona



Message from the Executive Director



It is with great pleasure that I can report that LADACIN Network has had another exciting and productive year. As we look back on the past year and ahead to the future, we hope to provide you with valuable insights into our progress, moving forward with unwavering determination. Throughout our challenges and achievements, we remain committed to transparency, accountability, and delivering the very best in programs and services to all those who have invested their trust in our Agency.

Grow NJ Kids is a state-sponsored initiative to raise the quality of childcare and early learning throughout New Jersey. Give and Take Child Care has successfully completed a rigorous, research-based Grow NJ Kids rating process and has been awarded 4 stars.

We received our thirteenth three-year accreditation by CARF, The Commission on Accreditation of Rehabilitation Facilities. We were thrilled to receive a generous grant of \$434,407 in July 2022 from the Monmouth County Freeholders to be used for the completion of the renovations on our Wall Group Home. We look forward to opening our 10th barrier-free, fully accessible, supported housing facility for adults with disabilities in the next fiscal year.

LADACIN's Board of Trustees, as stewards of the Agency, play a crucial role in the strategic direction of LADACIN Network. They are a dedicated and diverse group of individuals who bring various skills, expertise, and perspectives to our Agency. We are thrilled to announce the selection of another outstanding individual to join our esteemed Board of Trustees. Please join us in welcoming Joel Goldfinger, Vice President of Finance at LENNAR to our leadership team.

On behalf of our Board of Trustees, our devoted staff, and those we serve, we would like to express our heartfelt gratitude for your invaluable commitment to LADACIN Network this past year. Your support is not only an investment in our mission but also a testament to the positive change that can occur when a community comes together for a common cause.

Patricia Carlesimo
Patricia Carlesimo, Executive Director



Annual Corporate Sponsorship Program

The Annual Corporate Sponsorship Program is a partnership between LADACIN Network and participating Corporate Sponsors to answer the needs and advance the potential of infants, children, and adults with complex physical and developmental disabilities or delays in Monmouth and Ocean Counties.

PREMIER BENEFACTORS

CWR Wholesale Distribution
World Insurance Associates LLC

ELITE BENEFACTOR

Turning Point Restaurants

BENEFACTORS

Beasley Media Group - 95.9 WRAT & 100.1 WJRZ
New Jersey Natural Gas

PLATINUM GUARDIAN

LENNAR

DIAMOND GUARDIANS

T.F. Produce
Willis Towers Watson

GOLD GUARDIANS

Hospital for Special Surgery
OceanFirst Bank
Packaging and Distribution Resources
Preferred Home Health Care & Nursing Services
Rizco
TD Bank

Circle of Friends

BENEFACTORS

Boye Foundation
Jules L. Plangere, Jr. Family Foundation, Inc.
Pro Con Group, Inc.
Schroth Family Foundation
Sandy and Mark Witkowski

VISIONARIES

Maryanne and Mike Cohen
The Charles W. and Elizabeth D.
Goodyear Foundation
Home Depot Foundation
OceanFirst Foundation
The Provident Bank Foundation
TD Charitable Foundation

PATRONS

Sudie J. Burbage
Eleanor Twomey Charitable Trust
Patricia Englert
Gina and Philip A. Nisbet
Maureen Storch
Susan and Frank Walsh

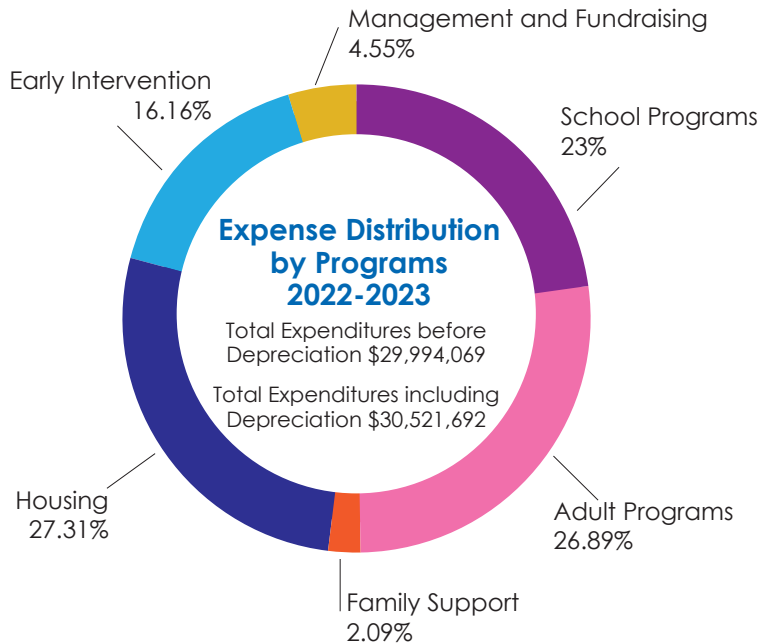
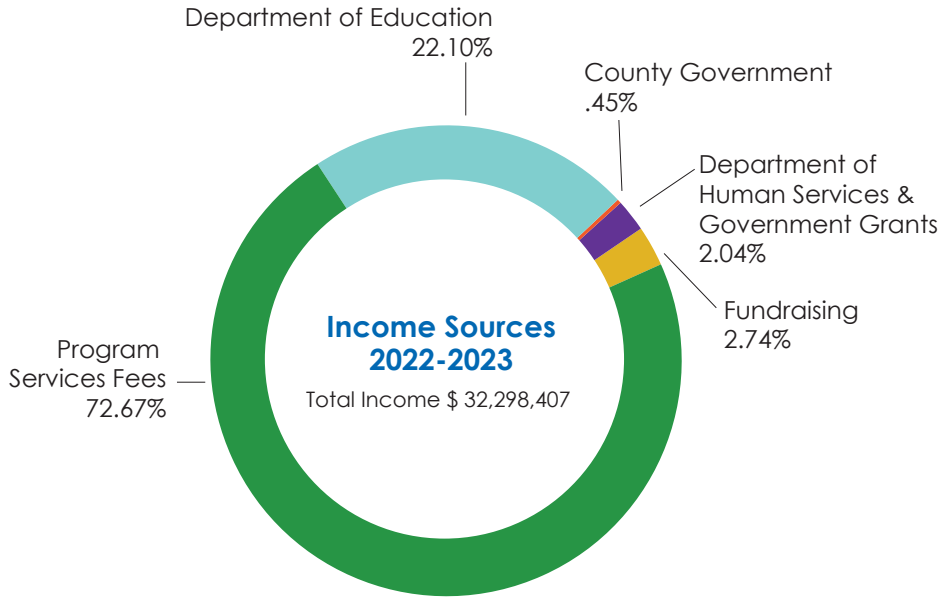
FRIENDS

Asbury Park-Wall Elks #128
Kevin Baldwin
Marlene and Stephen Bell
Marion and Bernard J. Berry, Jr.
Ellen and David Brown
Patricia Carlesimo
Rosemary and William P. Collopy
Susan and Ron Dimsey
Siobhan M. Dunn
Carole and George Feldman
Margean V. Gladysz
Marian Hartnett
Mary F. Hartnett, Esq.
and Richard J. Cino, Esq.
Laura and Michael S. Hartnett
Bonnie and Robert Hogan
Margo and Paul J. Hooker
Eileen and Robert J. Keller, Jr.
Karen Dunn Kelley and Joseph L. Kelley
The Kennedy E. Kowalski
Charitable Foundation
Lynne M. Kizis, Esq.
Rob Maher
Nicole and Anthony Marmo
McCormick & Company, Inc.
Monmouth Park Charity Fund, Inc.
Jerry B. Parflow
Mike Peragine
Erin Pratt
Preferred Home Health Care & Nursing
Jeanette Russell, Esq.
and Joseph J. Russell Jr., Esq.
Rosemary and Fred J. Schultz
Marilyn and Elliot Shapiro
Julia and Will Siegfried
Kelly Siegfried
The Honorable Robert Singer
Susan B. Stearns
Stephanie and Brian Swanke
Stephen Tanzer
Thomas S. Tedesco
Philip A. Tortoreti, Esq.
Trinity Worldwide Technologies, LLC
Lisa and Paul Van Heest
Dr. and Mrs. Vincent J. Vivona
Guenevere Walker
The Walmart Foundation

LADACIN Network's Programs and Services

The many services offered by LADACIN Network in Monmouth and Ocean Counties include:

- Department of Education approved programs at the Schroth School and the Lehmann School
- Adult education and training at the Schroth Center and the Lehmann Center
- Pre-vocational training and employment services at Access Unlimited
- Integrated child care program in Monmouth County
- An array of housing opportunities, including an independent living apartment complex, supported apartment complexes and group homes
- Early Intervention services and evaluations for eligibility
- Diagnostic clinics with the support of consulting physicians and specialists
- Transdisciplinary occupational, physical and speech/language therapy and nursing services
- Evaluation and support in the areas of augmentative communication, adaptive equipment, and rehabilitation technology
- Respite services
- Extended school year programs
- Personal care assistant services
- Comprehensive nutrition services
- Certified home health care services
- Specialized and lift-equipped transportation



LOCATIONS

Administrative Offices

1703 Kneeley Boulevard
Wanamassa, NJ 07712
732.493.5900

Schroth Center

1701 Kneeley Boulevard
Wanamassa, NJ 07712
732.493.5900

Lehmann Center

1100 Airport Road
Lakewood, NJ 08701
732.905.7200

Access Unlimited - Monmouth County

3500 Sunset Avenue, Suites D 3 & 4
Wanamassa, NJ 07712
732.643.9069

Access Unlimited - Ocean County

170 N. Oberlin Avenue, Suite 8
Lakewood, NJ 08701
732.905.0730

Family Support and Early Intervention

1703 Kneeley Boulevard
Wanamassa, NJ 07712
732.643.9064

RESIDENTIAL FACILITIES

Asbury Avenue Apartments

Neptune

Burnt Tavern Group Home

Millstone

Dewey Street Group Home

Long Branch

George V. Gray Apartments

Lakewood

Green Grove Group Home

Neptune

Mill Creek Group Home

Bayville

Novad Court Group Home

Millstone

Operation LIFE

Long Branch

Singer House Group Home

Lakewood

ADMINISTRATION

Patricia Carlesimo

Executive Director

Lisa Graul

Associate Executive Director,
Children's Services and
Information Technology

Steven Streit, MD

Medical Director

Celeste Smith

Associate Executive Director,
Adult Services and
Facility Operations

Barbra Bowers

Director, Family Support and
Related Services

Heather Cavise

Director, Human Resources

Crystal Fitzpatrick

Director, Finance

Luisa Vroman

Director, Development and
Community Relations

For more information visit us at: LADACIN.org

